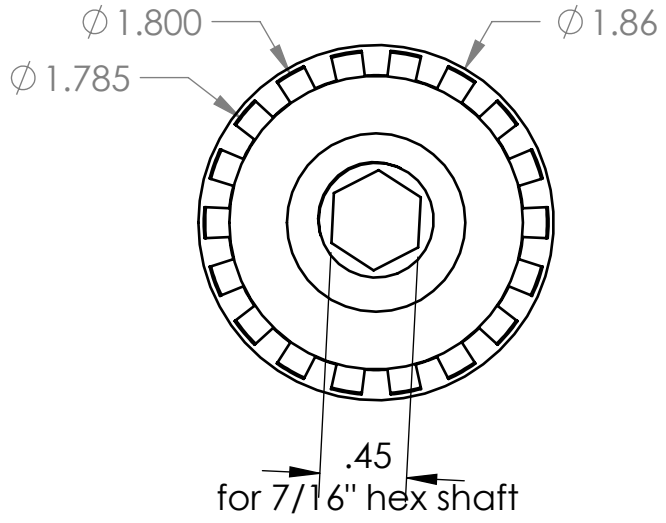
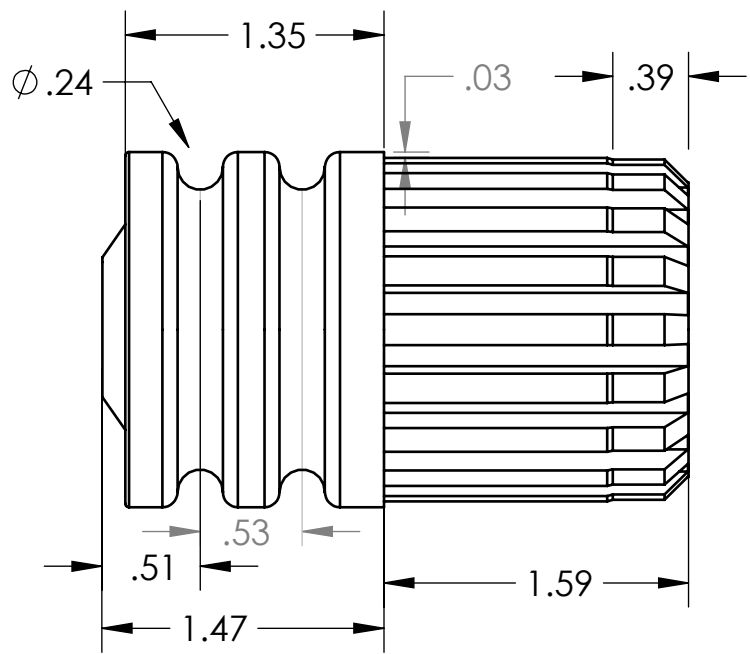
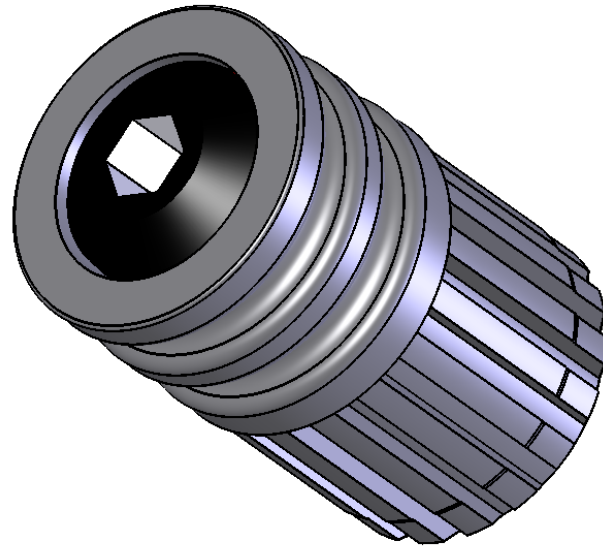
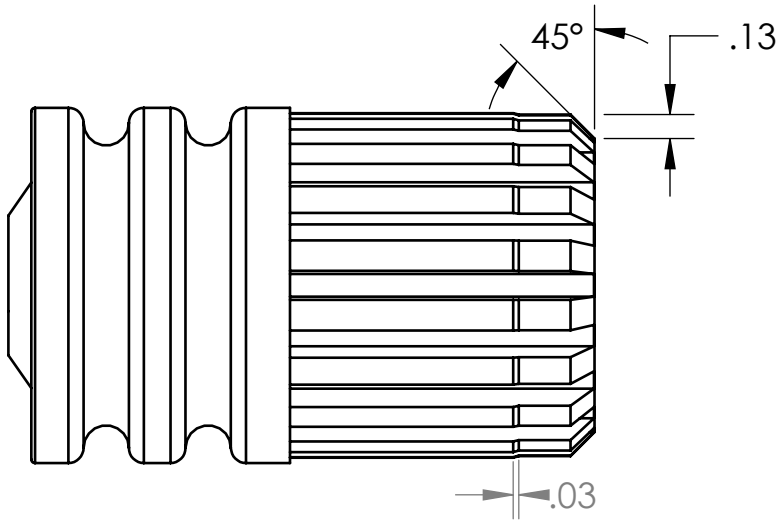


THE INFORMATION CONTAINED IN THIS DRAWING IS THE SOLE PROPERTY OF DURA-BELT, INC. ANY REPRODUCTION IN PART OR WHOLE WITHOUT THE WRITTEN PERMISSION OF DURA-BELT, INC. IS PROHIBITED.

UNLESS OTHERWISE SPECIFIED DIMENSIONS ARE IN INCHES  
 TOLERANCES ARE:  
 FRACTIONS DECIMALS ANGLES  
 ± 1/64 .XX ± .01 ± 3°  
 .XXX ± .005

D  
C  
B  
A

D  
C  
B  
A



ADDITIONAL NOTES  
 One (or two) 6002 ZZ A.B.E.C-1 bearings

SCALE 1:1  
 SIZE X  
 REV. A

**DURA-BELT, INC.**

PART NAME  
 Twin groove (Poly-O) endcap

MATERIAL  
 Glass-filled anti-static nylon

DATE  
 5-12-19

DRAWN BY  
 JGH

SHEET 1 OF 1

8 7 6 5 4 3 2 1